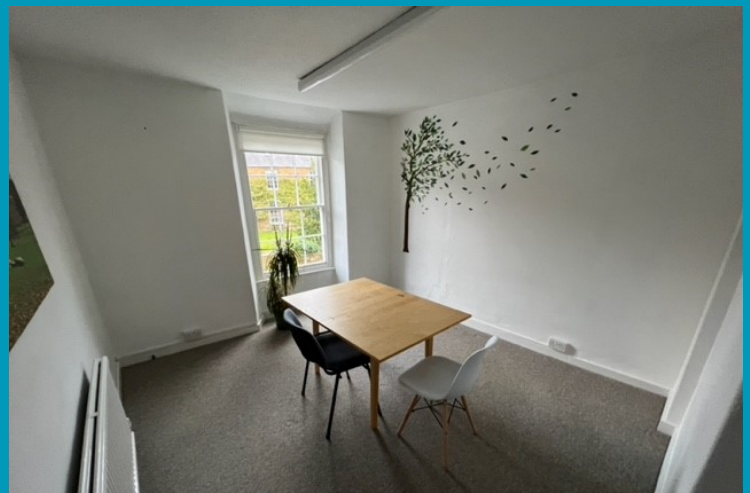


TO LET Treadwell House
High Street
Banbury
OX15 4PP



SERVICED OFFICE / THERAPY / CONSULTING ROOM TO LET

- Attractive self-contained first floor office
- Suitable for office, consulting, therapy or treatment room use
- Popular and well-served village location
- Shared kitchen and WC facilities
- Flexible lease terms available



TREADWELL HOUSE, HIGH STREET, BLOXHAM, BANBURY, OXFORDSHIRE, OX15 4PP

An attractive first floor serviced office available for immediate occupation. The accommodation is presented in good condition and would suit a range of occupiers including consultants, therapists, counsellors, beauty practitioners, remote workers and small businesses.

Occupiers benefit from access to shared kitchen facilities and separate WC accommodation within the building. Shared parking is available on a first-come, first-served basis, together with additional on-street parking nearby.

Please note that any furniture shown in marketing photographs will be removed prior to occupation unless otherwise agreed.

Location

Treadwell House occupies a prominent position in the heart of the sought-after village of Bloxham, approximately three miles south-west of Banbury.

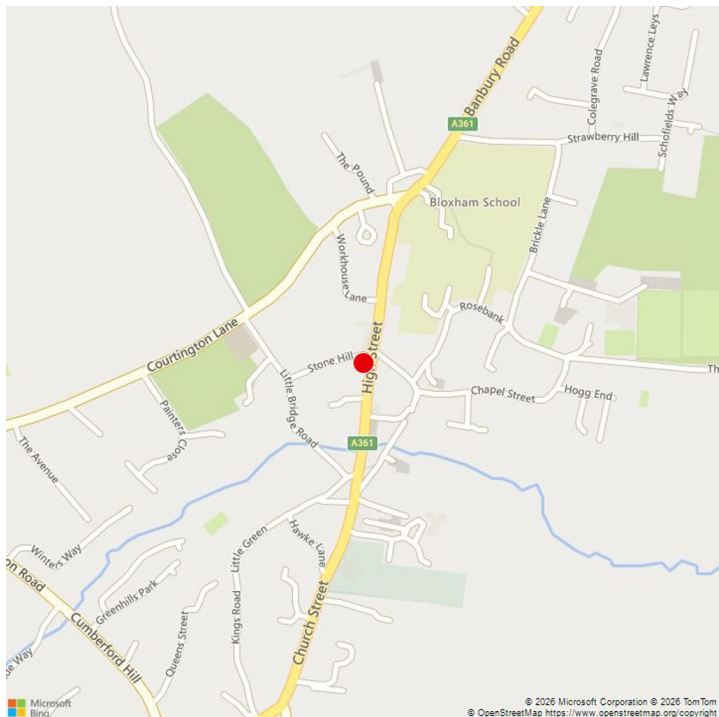
The village benefits from an excellent range of amenities including local shops, public houses, cafés, schools, post office facilities, medical services and regular bus routes, making it an attractive location for businesses and professionals alike.

Accommodation

TOTAL **117SQFT** **10.87SQM**

Tenure

To let on new full repairing and insuring lease for a term of years to be agreed.



Additional Information

Rent

£350.00 Per Month

EPC

Full details available upon request

Viewing

All viewings are strictly by appointment through Azure Property Consultants Ltd

For further information please contact:

Vanessa Mokwena
01227770587
vanessa@azurepc.co.uk