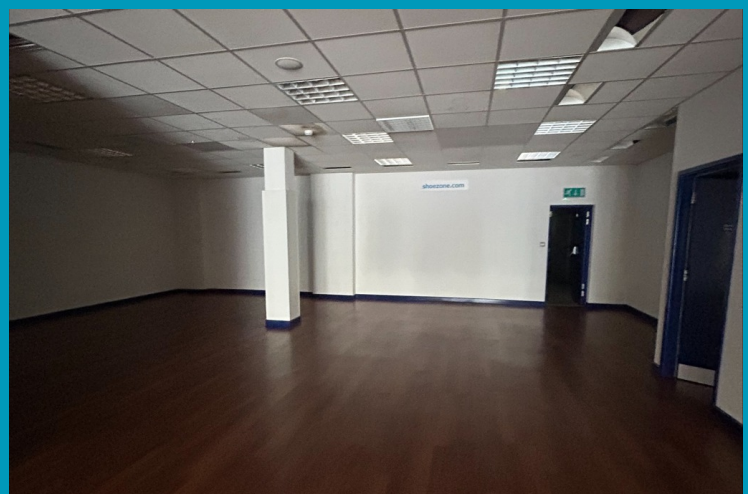
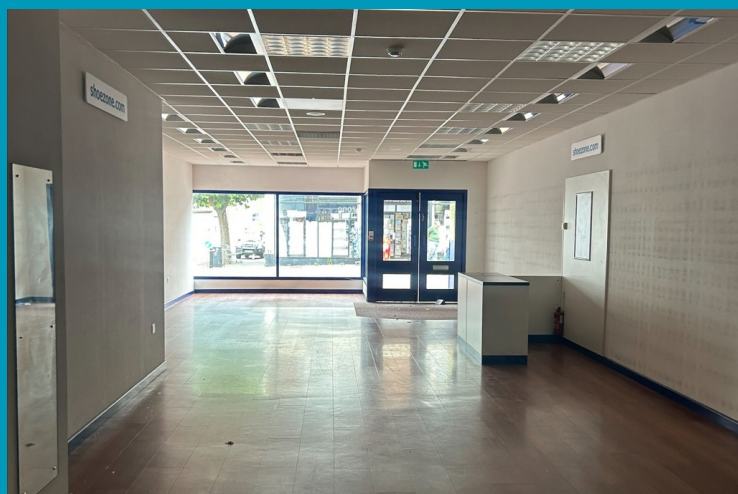


# TO LET

110 Mortimer Street  
Herne Bay  
CT6 5EB



## PRIME RETAIL UNIT TO LET

- PRIME LOCATION IN CENTRAL HERNE BAY
- SURROUNDED BY LOCAL AND NATIONAL RETAILERS
- VACANT POSSESSION AVAILABLE - READY FOR IMMEDIATE OCCUPATION
- HIGHLY VISIBLE
- GREAT FOOTFALL



110 MORTIMER STREET, HERNE BAY, KENT, CT6 5EB

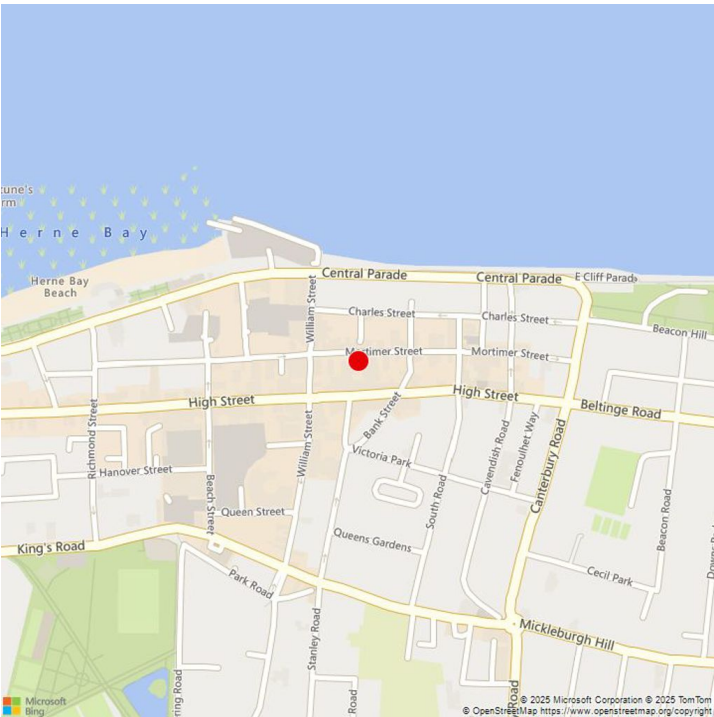
RETAIL SPACE TO LET A prominently located ground floor retail unit situated in the heart of Herne Bay's pedestrianised town centre. Formerly occupied by Shoe Zone, the property offers a well-configured layout with excellent shopfront visibility and consistent passing footfall. Suitable for a wide range of retail, office, clinic, or service-based uses under Use Class E. L-shaped open-plan layout with rear ancillary/storage rooms. Close to national retailers including Boots, Peacocks, Tesco, and others. Ideal for a variety of commercial occupiers seeking a central, accessible location.

Accommodation (Ground Floor Only) Spacious L-shaped shop floor Frontage onto Mortimer Street Rear access and ancillary storage

Herne Bay is a thriving coastal town located on the north Kent coast, popular with both residents and tourists. The property is situated in a central retail position on Mortimer Street, within close proximity to a range of local independents and national retailers. Located 8 miles north of Canterbury Nearby occupiers include Boots, Iceland, Peacocks and Tesco Strong pedestrian footfall and excellent visibility Well-connected via road and rail to Canterbury and London

Accommodation

TOTAL	1,182	109.81
-------	-------	--------



Additional Information

Rent

£23,000 Per Annum

EPC

C

Viewing

All viewings are strictly by appointment through Azure Property Consultants Ltd  
For further information please contact:

Vanessa Mokwena  
01227770587  
vanessa@azurepc.co.uk